

FOREWORD



Acting HOD

Ms. K.O. Dederen

It is my pleasure to share the publication Education Statistics in Limpopo with all our stakeholders. The publication covers 2013 information on schools, learners, educators and support staff collected from Ordinary and SNE schools, as well as ECD centers. The most important priorities in education is to achieve organizational efficiency and effectiveness by improving monitoring, evaluation and accountability. Thus, the purpose of this publication.

The Limpopo Department of Education is committed to making education statistics more accessible to the public and we will continue improving our reporting. We trust these will contribute significantly towards the improvement of the system and will also give the public an opportunity to measure the progress made towards achieving the redress and transformation goals of the education system.

I am confident that this report will serve as a source of useful information for educators, learners and parents, administrators, managers, decision-makers, analysts and other important role players both at Provincial and National level, and should be used to inform education policy, decision-making, and further research on Education.

The publication would not have been possible without the contribution of governance structures in schools both the SGB's as well as the Centre Governing Bodies (CGB's) in both public and independent institutions. Their unwavering leadership will forever be appreciated.

On behalf of the department, I would like to pass a special appreciation to the principals/headmasters and their entire School Management Teams (SMT) for their leadership and support, that has brought us this far. To everybody else in the value-chain, a special word of appreciation goes to you as well for the task well executed. This is due to the fact that the department has achieved a 100% return rate from all the institutions (public and independent) in the province during 2013 surveys. Undoubtedly, this is an image we will like to retain and sustain going into the future.

A handwritten signature in red ink that reads "K.O. Dederen". The signature is written in a cursive style and is placed on a light blue rectangular background.

K.O. Dederen
Acting HEAD OF DEPARTMENT

Contents

| | |
|---|----|
| 1. INTRODUCTION..... | 3 |
| 2. ABBREVIATIONS and ACRONYMS | 3 |
| 3. ORDINARY SCHOOLS | 4 |
| 3.1 LEARNER AND EDUCATOR INFORMATION..... | 4 |
| 3.1.1 Number of Learners, Educators and Schools in the Ordinary School Sector | 4 |
| 3.1.2 Provincial Grade Enrolment..... | 5 |
| 3.1.3 Number of Learners (Both Public and Independent) Schools per Gender and District..... | 10 |
| 3.1.4 Provincial Population Group Enrolment | 13 |
| 3.1.5 Subjects with High Enrolments (Both Public and Independent) per District..... | 15 |
| 3.1.6 Provincial Learner Enrolment per Phase | 16 |
| 3.1.7 Provincial Learner Enrolment per Quintile | 17 |
| 3.2 SCHOOL INFORMATION..... | 18 |
| 3.2.1 Number of Schools per Sector..... | 18 |
| 3.2.2 Number of Schools per Phase..... | 19 |
| 3.2.3 Number of Public Schools per Quintile..... | 21 |
| 4. SNE INFORMATION..... | 23 |
| 4.1 SNE SCHOOL, LEARNER AND EDUCATOR INFORMATION | 24 |
| 4.1.1 Provincial SNE Population Group Enrolment | 24 |
| 4.1.2 Provincial SNE Grade Enrolment..... | 25 |
| 4.1.3 Public SNE Male and Female Comparison..... | 26 |
| 4.1.4 Provincial Learner Enrolment per Disability | 27 |
| 5. ECD INFORMATION | 29 |
| 5.1 ECD LEARNER, EDUCATOR AND CENTRE INFORMATION | 29 |
| 5.1.1 Number of ECD Learners, Educators and Centres per District..... | 29 |
| 5.1.2 Provincial ECD Male and Female Comparison | 30 |
| 5.1.3 Provincial ECD Enrolment per Grade | 31 |
| 6. Contact Details | 32 |

1. INTRODUCTION

This publication reports information from Ordinary Schools both Public and Independent, SNE (Special Need Education) schools, AET (Adult Basic Education and Training) and ECD centres. The ordinary schools' annual survey (ASS) and the ECD annual survey are conducted on the first Tuesday in March, AET annual in May and SNE annual in September every year as designated in the National Education Information Policy. (Gazette 26710, 2004)

The data in this publication has been gathered through the Annual Survey instruments that were sent to all Educational institutions, both Public and Independent. Data in this publication is presented according to the Department's new demarcations into 10 Districts, since 2012.

2. ABBREVIATIONS and ACRONYMS

| | |
|----------|---|
| EMIS | Education Management Information System |
| ECD | Early Childhood Development |
| SNE | Special Needs Education |
| SA-SAMS | South African Schools' Administration and Management System |
| Pre-Gr R | Year before Gr R |
| Gr R | Reception year, or year prior to Grade 1 |
| Gr | Grade |

3. ORDINARY SCHOOLS (both Public and Independent)

3.1 LEARNER AND EDUCATOR INFORMATION

3.1.1 Table 1: Number of Learners, Educators and Schools in the Ordinary School Sector, by District, in 2013

| District | Ordinary Public Schools | | | Ordinary Independent Schools | | | Ordinary Public and Independent Schools | | |
|-------------------|-------------------------|----------------|--------------|------------------------------|--------------|-------------|---|--------------------------|----------------|
| | Schools | Learners | Educators | Schools | Learners | Educators | Schools | As % of Provincial Total | Learners |
| LEBOWAKGOMO | 247 | 93326 | 3209 | 3 | 1300 | 53 | 250 | 6.1 | 94626 |
| MOGALAKWENA | 268 | 93298 | 3254 | 9 | 2509 | 136 | 277 | 6.8 | 95807 |
| MOPANI | 474 | 239501 | 7725 | 14 | 4954 | 275 | 488 | 12.0 | 244455 |
| POLOKWANE | 671 | 278852 | 9381 | 23 | 12382 | 502 | 694 | 17.0 | 291234 |
| RIBA CROSS | 255 | 94843 | 3061 | 8 | 3236 | 118 | 263 | 6.5 | 98079 |
| SEKHUKHUNE | 655 | 262011 | 8895 | 17 | 6359 | 291 | 672 | 16.5 | 268370 |
| TSHIPISE-SAGOLE | 218 | 71702 | 2377 | 6 | 2088 | 77 | 224 | 5.5 | 73790 |
| TZANEEN | 219 | 100948 | 3625 | 10 | 3538 | 189 | 229 | 5.6 | 104486 |
| VHEMBE | 743 | 337099 | 11259 | 50 | 16430 | 732 | 793 | 19.5 | 353529 |
| WATERBERG | 177 | 76525 | 2521 | 5 | 357 | 39 | 182 | 4.5 | 76882 |
| Provincial | 3927 | 1648105 | 55307 | 145 | 53153 | 2412 | 4072 | 100.0 | 1701258 |

Table 1 reflects how many ordinary public and independent schools were per District in 2013 and how many learners and educators were in each District.

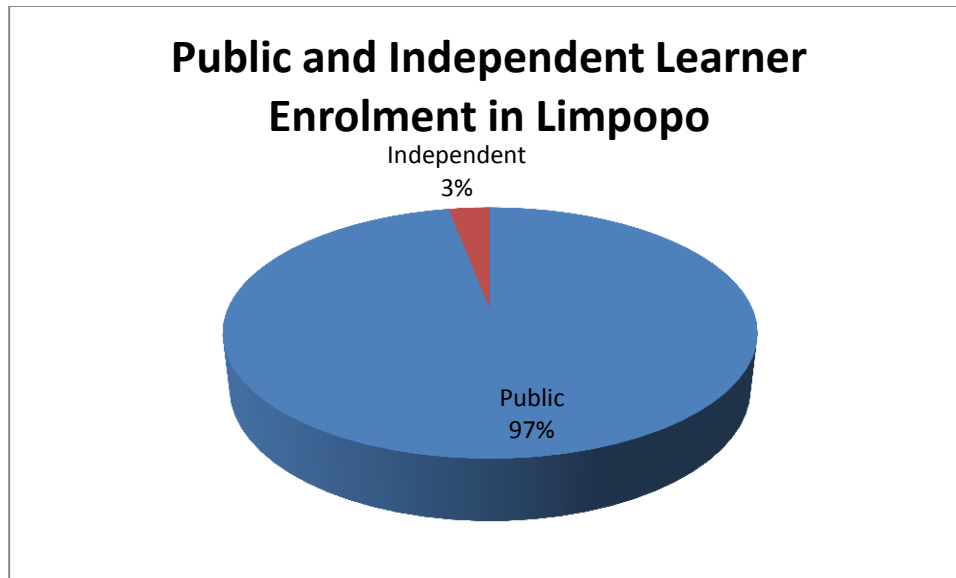


Figure 1: Public and Independent Learner Enrolment in Limpopo

Figure 1 reflects that 97% of Ordinary Schools in Limpopo are in the Public School Sector

3.1.2 Table 2: Number of Learners (Both Public and Independent) per Grade and District

| District | Pre Gr R | Gr R | Gr 1 | Gr 2 | Gr 3 | Gr 4 | Gr 5 | Gr 6 | Gr 7 | Gr 8 | Gr 9 | Gr 10 | Gr 11 | Gr 12 | Other | TOTAL |
|-------------------|-------------|---------------|---------------|---------------|---------------|---------------|---------------|---------------|---------------|---------------|---------------|---------------|---------------|--------------|-----------|----------------|
| LEBOWAKGOMO | 0 | 6738 | 8286 | 7965 | 7394 | 6433 | 6256 | 6152 | 6229 | 6518 | 10299 | 9756 | 7039 | 5561 | 0 | 94626 |
| MOGALAKWENA | 83 | 6954 | 8369 | 7829 | 7112 | 6630 | 6389 | 6503 | 6487 | 6727 | 10757 | 10358 | 6901 | 4708 | 0 | 95807 |
| MOPANI | 190 | 18210 | 21779 | 20154 | 18144 | 16964 | 16604 | 17102 | 17288 | 17324 | 27217 | 24889 | 16883 | 11707 | 0 | 244455 |
| POLOKWANE | 202 | 20508 | 24358 | 22808 | 21592 | 19275 | 19326 | 19070 | 19998 | 21813 | 32145 | 29693 | 23207 | 17239 | 0 | 291234 |
| RIBA CROSS | 4 | 7788 | 9036 | 8189 | 7365 | 6573 | 6585 | 6486 | 6444 | 6726 | 11305 | 10718 | 6995 | 3865 | 0 | 98079 |
| SEKHUKHUNE | 157 | 19987 | 24295 | 22433 | 20986 | 18711 | 18129 | 18099 | 18028 | 19476 | 29458 | 29222 | 17207 | 12182 | 0 | 268370 |
| TSHIPISE-SAGOLE | 39 | 5163 | 6576 | 6072 | 5478 | 5218 | 5273 | 5252 | 5094 | 6027 | 8126 | 8342 | 4020 | 3110 | 0 | 73790 |
| TZANEEN | 73 | 7302 | 8753 | 7934 | 7488 | 6852 | 6831 | 6989 | 7305 | 7789 | 11505 | 10948 | 8543 | 6174 | 0 | 104486 |
| VHEMBE | 514 | 25388 | 30559 | 27981 | 25260 | 23835 | 24043 | 23953 | 24266 | 25869 | 38236 | 43201 | 22598 | 17801 | 25 | 353529 |
| WATERBERG | 149 | 5522 | 7871 | 7234 | 6552 | 6447 | 6253 | 5679 | 5507 | 5457 | 7172 | 6079 | 4289 | 2671 | 0 | 76882 |
| Provincial | 1411 | 123560 | 149882 | 138599 | 127371 | 116938 | 115689 | 115285 | 116646 | 123726 | 186220 | 183206 | 117682 | 85018 | 25 | 1701258 |

Table 2 reflects an enormous decrease in learner numbers from grades 10 to 12 (See table 2 and figure 2). In 2012 there was a decrease from Grade 9 to Grade 10 in learner enrolment.

Public and Independent Learner Enrolment per Grade

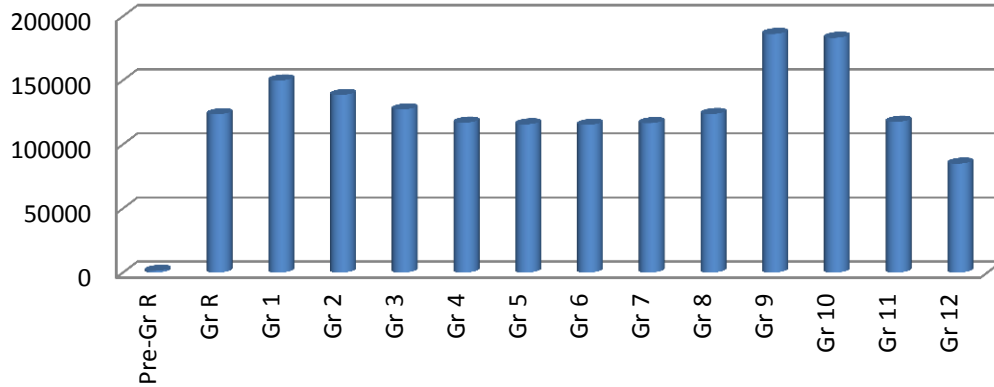


Figure 2: Public and Independent Learner Enrolment per Grade

Figure 2 shows that most learners in Limpopo (Public and Independent) are in Grade 9 and 10. 8.8 % of the total number of learners are in Gr 1 whilst only 4.99 % are in Grade.12

Public and Independent Learner Enrolment per Grade as Provincial Percentage

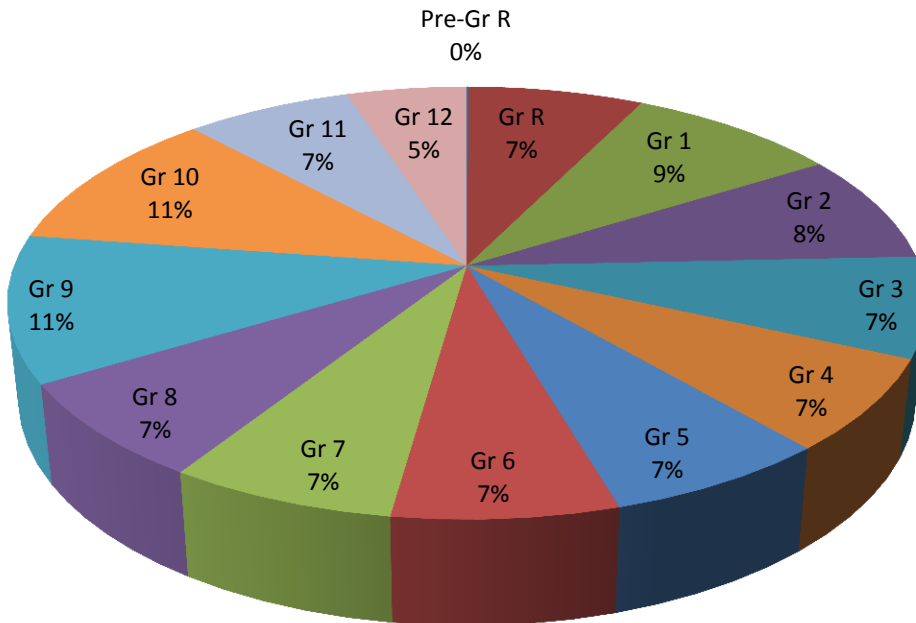


Figure 3: Public and Independent Learner Enrolment per Grade as Provincial Percentage

Figure 3 reflects that 11 % of the overall Learner Enrolment is in Grade 9 and 11 % are in Grade 10. Gr 1 learners are twice as many as the Gr 12 learners.

Table 3: Public Learner Enrolment per Grade

| District | Pre-Gr R | Gr R | Gr 1 | Gr 2 | Gr 3 | Gr 4 | Gr 5 | Gr 6 | Gr 7 | Gr 8 | Gr 9 | Gr 10 | Gr 11 | Gr 12 | Other | TOTAL |
|-------------------|------------|---------------|---------------|---------------|---------------|---------------|---------------|---------------|---------------|---------------|---------------|---------------|---------------|--------------|-----------|----------------|
| LEBOWAKGOMO | 0 | 6679 | 8158 | 7840 | 7295 | 6333 | 6163 | 6069 | 6155 | 6396 | 10170 | 9629 | 6947 | 5492 | 0 | 93326 |
| MOGALAKWENA | 2 | 6781 | 8149 | 7649 | 6964 | 6479 | 6255 | 6388 | 6390 | 6529 | 10528 | 10071 | 6666 | 4447 | 0 | 93298 |
| MOPANI | 79 | 17834 | 21361 | 19790 | 17802 | 16676 | 16342 | 16793 | 16991 | 16970 | 26800 | 24398 | 16471 | 11194 | 0 | 239501 |
| POLOKWANE | 0 | 19738 | 23218 | 21725 | 20660 | 18417 | 18507 | 18282 | 19189 | 20702 | 30977 | 28547 | 22395 | 16495 | 0 | 278852 |
| RIBA CROSS | 0 | 7600 | 8823 | 7954 | 7139 | 6359 | 6415 | 6315 | 6311 | 6389 | 10935 | 10409 | 6646 | 3548 | 0 | 94843 |
| SEKHUKHUNE | 108 | 19674 | 23826 | 22017 | 20549 | 18220 | 17684 | 17686 | 17554 | 18851 | 28783 | 28531 | 16753 | 11775 | 0 | 262011 |
| TSHIPISE-SAGOLE | 0 | 5056 | 6288 | 5832 | 5242 | 5021 | 5062 | 5073 | 4926 | 5938 | 8033 | 8224 | 3958 | 3049 | 0 | 71702 |
| TZANEEN | 0 | 7019 | 8423 | 7653 | 7258 | 6678 | 6627 | 6793 | 7102 | 7443 | 11163 | 10611 | 8259 | 5919 | 0 | 100948 |
| VHEMBE | 57 | 23664 | 28897 | 26407 | 23829 | 22593 | 22804 | 22812 | 23161 | 25020 | 37329 | 42194 | 21702 | 16605 | 25 | 337099 |
| WATERBERG | 128 | 5491 | 7814 | 7194 | 6526 | 6412 | 6231 | 5657 | 5485 | 5436 | 7146 | 6064 | 4279 | 2662 | 0 | 76525 |
| Provincial | 374 | 119536 | 144957 | 134061 | 123264 | 113188 | 112090 | 111868 | 113264 | 119674 | 181864 | 178678 | 114076 | 81186 | 25 | 1648105 |

Table 3 shows that in the Public Sector, the Learner Enrolment decreases from Grade 10 to Grade 12 (see table 3 and figure 4)

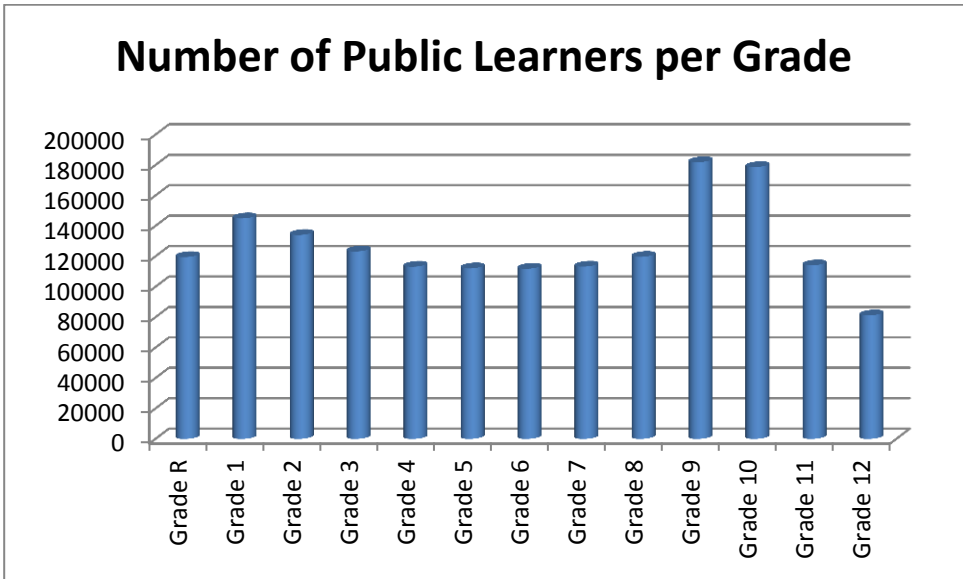


Figure 4: Numbers of Public Learners per Grade

Table 4: Independent Learner Enrolment per Grade

| District | Pre-Gr R | Gr R | Gr 1 | Gr 2 | Gr 3 | Gr 4 | Gr 5 | Gr 6 | Gr 7 | Gr 8 | Gr 9 | Gr 10 | Gr 11 | Gr 12 | TOTAL |
|-------------------|-------------|-------------|-------------|-------------|-------------|-------------|-------------|-------------|-------------|-------------|-------------|-------------|-------------|-------------|--------------|
| LEBOWAKGOMO | 0 | 59 | 128 | 125 | 99 | 100 | 93 | 83 | 74 | 122 | 129 | 127 | 92 | 69 | 1300 |
| MOGALAKWENA | 81 | 173 | 220 | 180 | 148 | 151 | 134 | 115 | 97 | 198 | 229 | 287 | 235 | 261 | 2509 |
| MOPANI | 111 | 376 | 418 | 364 | 342 | 288 | 262 | 309 | 297 | 354 | 417 | 491 | 412 | 513 | 4954 |
| POLOKWANE | 202 | 770 | 1140 | 1083 | 932 | 858 | 819 | 788 | 809 | 1111 | 1168 | 1146 | 812 | 744 | 12382 |
| RIBA CROSS | 4 | 188 | 213 | 235 | 226 | 214 | 170 | 171 | 133 | 337 | 370 | 309 | 349 | 317 | 3236 |
| SEKHUKHUNE | 49 | 313 | 469 | 416 | 437 | 491 | 445 | 413 | 474 | 625 | 675 | 691 | 454 | 407 | 6359 |
| TSHIPISE-SAGOLE | 39 | 107 | 288 | 240 | 236 | 197 | 211 | 179 | 168 | 89 | 93 | 118 | 62 | 61 | 2088 |
| TZANEEN | 73 | 283 | 330 | 281 | 230 | 174 | 204 | 196 | 203 | 346 | 342 | 337 | 284 | 255 | 3538 |
| VHEMBE | 457 | 1724 | 1662 | 1574 | 1431 | 1242 | 1239 | 1141 | 1105 | 849 | 907 | 1007 | 896 | 1196 | 16430 |
| WATERBERG | 21 | 31 | 57 | 40 | 26 | 35 | 22 | 22 | 22 | 21 | 26 | 15 | 10 | 9 | 357 |
| Provincial | 1037 | 4024 | 4925 | 4538 | 4107 | 3750 | 3599 | 3417 | 3382 | 4052 | 4356 | 4528 | 3606 | 3832 | 53153 |

Table 4 shows that in Independent Schools, there are more learners in Pre-Grade R than in Public School. The decrease of learners from Grade 10 to Grade 11 is much less than in Public Schools with an increase of Grade 12 learners in the Independent sector (see table 4 and figure 5)

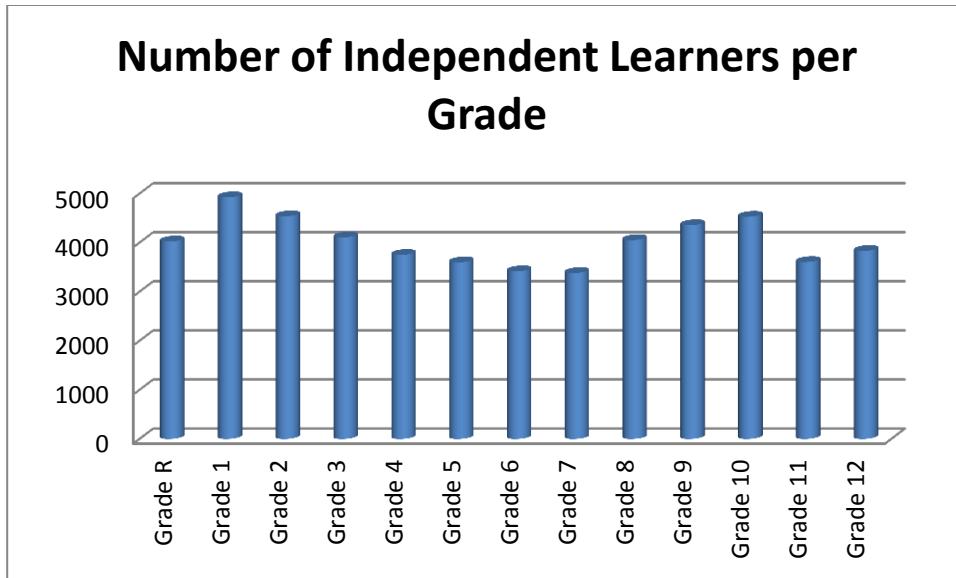


Figure 5: Number of Independent Learners per Grade

3.1.3 Table 5: Number of Learners (Both Public and Independent) per Gender and District

| District | Female | Male | TOTAL |
|-------------------|---------------|---------------|----------------|
| LEBOWAKGOMO | 46662 | 47964 | 94626 |
| MOGALAKWENA | 47151 | 48656 | 95807 |
| MOPANI | 121020 | 123435 | 244455 |
| POLOKWANE | 143297 | 147937 | 291234 |
| RIBA CROSS | 48370 | 49709 | 98079 |
| SEKHUKHUNE | 131756 | 136614 | 268370 |
| TSHIPISE-SAGOLE | 36170 | 37620 | 73790 |
| TZANEEN | 51867 | 52619 | 104486 |
| VHEMBE | 173406 | 180123 | 353529 |
| WATERBERG | 38035 | 38847 | 76882 |
| Provincial | 837734 | 863524 | 1701258 |

Table 5 reflects that there are slightly more male than female learners in all Districts (see table 5 and figure 6) Provincially 50.76% of learners in Ordinary Schools are male and 49.24% are female.

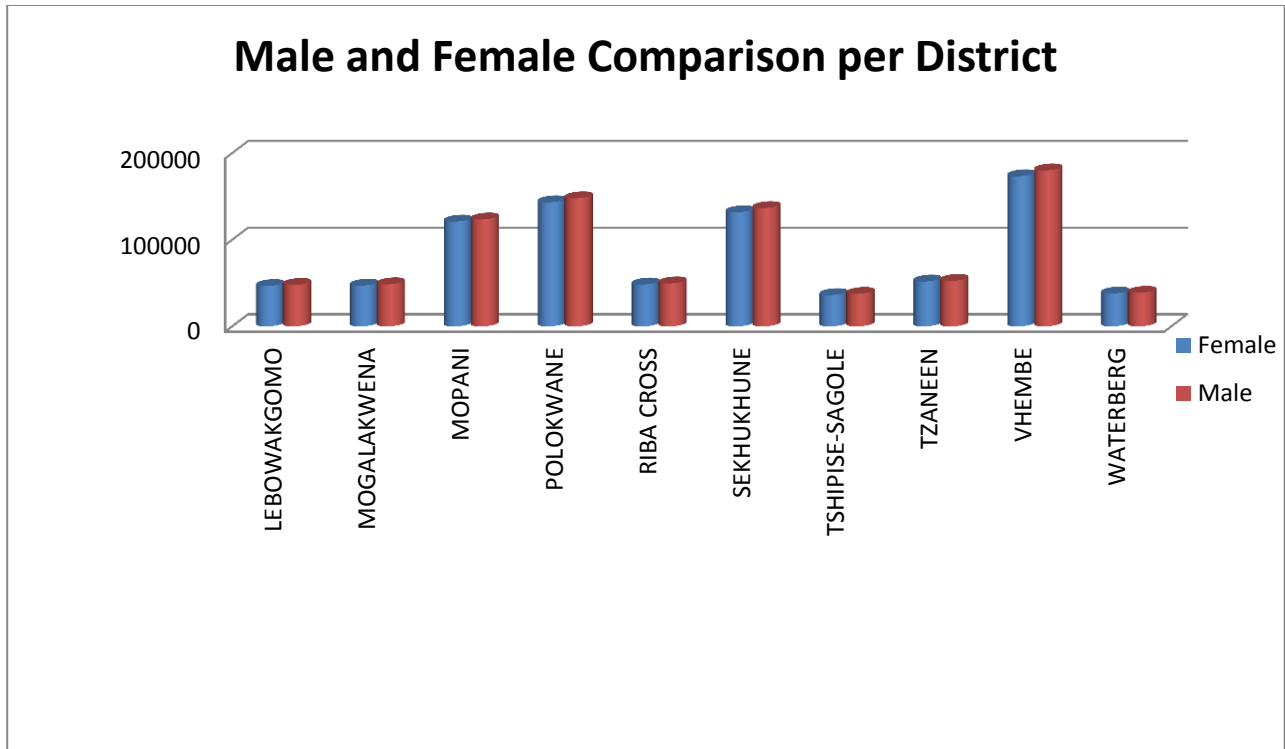


Figure 6: Male and Female Comparison per District

Table 6: Public Learner Enrolment per District and Gender

| District | Female | Male | TOTAL |
|-------------------|---------------|---------------|----------------|
| LEBOWAKGOMO | 45950 | 47376 | 93326 |
| MOGALAKWENA | 45913 | 47385 | 93298 |
| MOPANI | 118457 | 121044 | 239501 |
| POLOKWANE | 136920 | 141932 | 278852 |
| RIBA CROSS | 46620 | 48223 | 94843 |
| SEKHUKHUNE | 128489 | 133522 | 262011 |
| TSHIPISE-SAGOLE | 35147 | 36555 | 71702 |
| TZANEEN | 49995 | 50953 | 100948 |
| VHEMBE | 164948 | 172151 | 337099 |
| WATERBERG | 37854 | 38671 | 76525 |
| Provincial | 810293 | 837812 | 1648105 |

Table 6 reflects that there are more male than female learners in all Districts. Most Public Learners are in the Vhembe District, whilst the least learners in Public schools are in the Tshipise-Sagole District of Limpopo (see table 6 and figure 7).

Public Male and Female Comparison per District

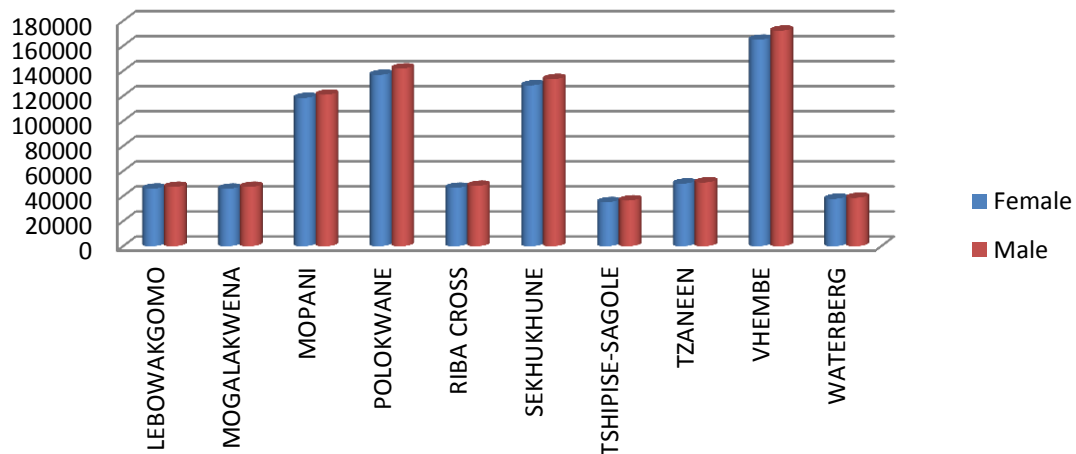


Figure 7: Public Male and Female Comparison per District

Table 7: Independent Learner Enrolment per District and Gender

| District | Female | Male | TOTAL |
|-------------------|--------------|--------------|--------------|
| LEBOWAKGOMO | 712 | 588 | 1300 |
| MOGALAKWENA | 1238 | 1271 | 2509 |
| MOPANI | 2563 | 2391 | 4954 |
| POLOKWANE | 6377 | 6005 | 12382 |
| RIBA CROSS | 1750 | 1486 | 3236 |
| SEKHUKHUNE | 3267 | 3092 | 6359 |
| TSHIPISE-SAGOLE | 1023 | 1065 | 2088 |
| TZANEEN | 1872 | 1666 | 3538 |
| VHEMBE | 8458 | 7972 | 16430 |
| WATERBERG | 181 | 176 | 357 |
| Provincial | 27441 | 25712 | 53153 |

Table 7 reflects that there are more female than male learners in the Independent Sector of all Districts. Vhembe has the highest Independent Learner Enrolment in Limpopo. (see table 7 and figure 8)

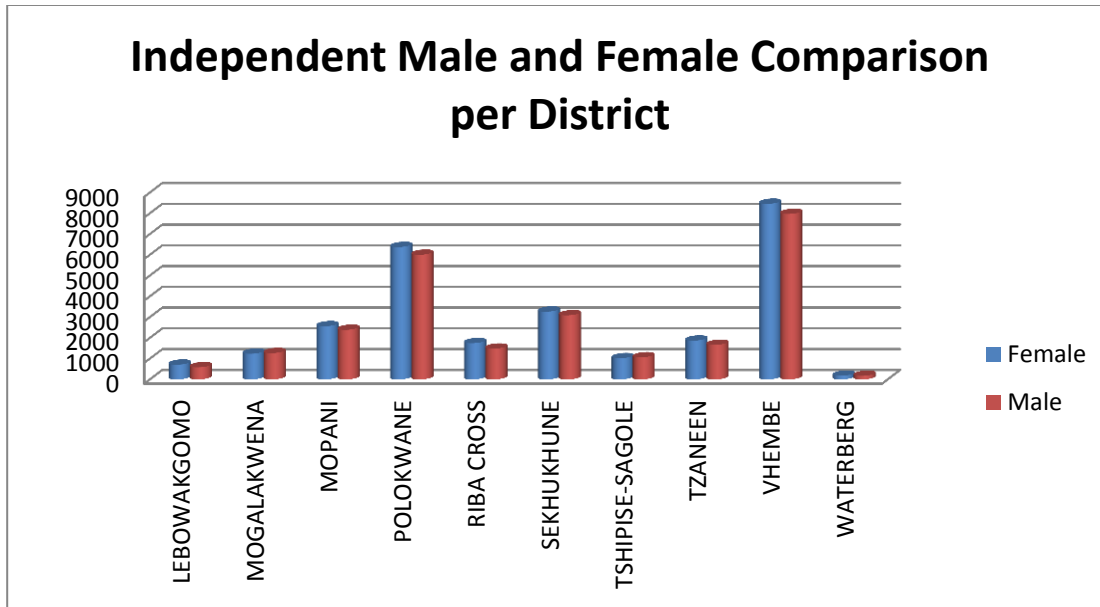


Figure 8: Independent Male and Female Comparison per District

3.1.4 Table 8: Number of Learners (Both Public and Independent) per Population Group and District

| District | Black | Coloured | Indian | Other | White |
|-------------------|----------------|-------------|-------------|------------|--------------|
| LEBOWAKGOMO | 94583 | 6 | 29 | 5 | 3 |
| MOGALAKWENA | 94062 | 49 | 251 | 15 | 1430 |
| MOPANI | 242137 | 117 | 159 | 11 | 2031 |
| POLOKWANE | 284101 | 1058 | 824 | 88 | 5163 |
| RIBA CROSS | 97540 | 51 | 122 | 15 | 351 |
| SEKHUKHUNE | 266485 | 68 | 142 | 40 | 1635 |
| TSHIPISE-SAGOLE | 73218 | 34 | 43 | 5 | 490 |
| TZANEEN | 101851 | 66 | 244 | 30 | 2295 |
| VHEMBE | 351020 | 158 | 813 | 88 | 1450 |
| WATERBERG | 69845 | 293 | 217 | 44 | 6483 |
| Provincial | 1674842 | 1900 | 2844 | 341 | 21331 |

Table 8 reflects that most learners in Limpopo belong to the black population and are in the Vhembe District.

Table 9: Public Learner Enrolment per Population Group and District

| District | Black | Coloured | Indian | Other | White |
|-------------------|----------------|-------------|-------------|------------|--------------|
| LEBOWAKGOMO | 93288 | 3 | 27 | 5 | 3 |
| MOGALAKWENA | 91855 | 35 | 142 | 8 | 1258 |
| MOPANI | 237542 | 95 | 100 | 11 | 1753 |
| POLOKWANE | 273090 | 928 | 361 | 51 | 4422 |
| RIBA CROSS | 94434 | 41 | 59 | 11 | 298 |
| SEKHUKHUNE | 260466 | 61 | 126 | 18 | 1340 |
| TSHIPISE-SAGOLE | 71280 | 24 | 41 | 5 | 352 |
| TZANEEN | 98758 | 46 | 177 | 28 | 1939 |
| VHEMBE | 335170 | 130 | 648 | 83 | 1068 |
| WATERBERG | 69623 | 289 | 212 | 44 | 6357 |
| Provincial | 1625506 | 1652 | 1893 | 264 | 18790 |

Table 9 reflects that most Public learners that belong to the white population are located in the Waterberg District.

Table 10: Independent Learner Enrolment per Population Group and District

| District | Black | Coloured | Indian | Other | White |
|-------------------|--------------|------------|------------|-----------|-------------|
| LEBOWAKGOMO | 1295 | 3 | 2 | 0 | 0 |
| MOGALAKWENA | 2207 | 14 | 109 | 7 | 172 |
| MOPANI | 4595 | 22 | 59 | 0 | 278 |
| POLOKWANE | 11011 | 130 | 463 | 37 | 741 |
| RIBA CROSS | 3106 | 10 | 63 | 4 | 53 |
| SEKHUKHUNE | 6019 | 7 | 16 | 22 | 295 |
| TSHIPISE-SAGOLE | 1938 | 10 | 2 | 0 | 138 |
| TZANEEN | 3093 | 20 | 67 | 2 | 356 |
| VHEMBE | 15850 | 28 | 165 | 5 | 382 |
| WATERBERG | 222 | 4 | 5 | 0 | 126 |
| Provincial | 49336 | 248 | 951 | 77 | 2541 |

Table 10 reflects that 92.8 % of learners in Independent Schools belong to the black population group. 4.8 % of Independent learners belong to the white population group. 3.1 % of the overall Provincial Learner Enrolment attends Independent Schools.

3.1.5 Table 11: Subjects with High Enrolments in Grades 10, 11 and 12 (Both Public and Independent) per District

| District | SePedi Home Lang | TshiVenda Home Lang | XiTsonga Home Lang | Accounting | Business Studies | Geography | History | Mathematical Literacy | Mathematics | Economics |
|-------------------|------------------|---------------------|--------------------|--------------|------------------|---------------|--------------|-----------------------|---------------|---------------|
| LEBOWAKGOMO | 22341 | 0 | 15 | 5546 | 6663 | 11233 | 2006 | 12035 | 10321 | 7527 |
| MOGALAKWENA | 21306 | 0 | 120 | 6114 | 6440 | 9011 | 2090 | 11700 | 10267 | 6531 |
| MOPANI | 26700 | 0 | 25934 | 11281 | 14160 | 31887 | 14406 | 35679 | 17800 | 15145 |
| POLOKWANE | 65953 | 131 | 119 | 20222 | 21783 | 33335 | 8651 | 35809 | 34328 | 24391 |
| RIBA CROSS | 21194 | 0 | 0 | 6877 | 6763 | 9943 | 1997 | 12221 | 9357 | 7673 |
| SEKHUKHUNE | 52271 | 0 | 6 | 16201 | 19582 | 22799 | 5257 | 30244 | 28368 | 20621 |
| TSHIPISE-SAGOLE | 322 | 14897 | 97 | 3630 | 4057 | 10584 | 3410 | 8294 | 7178 | 5409 |
| TZANEEN | 16488 | 0 | 8125 | 5222 | 6172 | 14959 | 9039 | 16071 | 9592 | 6738 |
| VHEMBE | 201 | 56105 | 25957 | 17652 | 20730 | 53630 | 21779 | 44630 | 38970 | 23100 |
| WATERBERG | 8147 | 0 | 50 | 3462 | 4531 | 6982 | 1971 | 7502 | 5715 | 3078 |
| Provincial | 234923 | 71133 | 60423 | 96207 | 110881 | 204363 | 70606 | 214185 | 171896 | 120213 |

Table 11 reflects that 13.8 % of learners in Gr.10 to12 in Limpopo are taking Sepedi as home language in Limpopo and is most spoken in the Polokwane District, followed by Tshivenda in the Vhembe District. Most learners taking Mathematics Literacy and Mathematics as subjects are in Vhembe and Polokwane.

3.1.6 Table 12: Number of Learners (Both Public and Independent) per Phase and District

| District | COMBINED | INTERMEDIATE | PRIMARY | SECONDARY | TOTAL |
|-------------------|--------------|--------------|---------------|-------------|----------------|
| LEBOWAKGOMO | 2301 | 0 | 53996 | 38329 | 94626 |
| MOGALAKWENA | 2191 | 0 | 55407 | 38209 | 95807 |
| MOPANI | 5895 | 1087 | 142693 | 94780 | 244455 |
| POLOKWANE | 11115 | 0 | 160074 | 120045 | 291234 |
| SEKHUKHUNE | 3099 | 0 | 57053 | 37927 | 98079 |
| RIBA CROSS | 21171 | 3271 | 146131 | 97797 | 268370 |
| TSHIPISE-SAGOLE | 2772 | 0 | 42412 | 28606 | 73790 |
| TZANEEN | 3573 | 0 | 57619 | 43294 | 104486 |
| VHEMBE | 17524 | 0 | 195078 | 140927 | 353529 |
| WATERBERG | 2518 | 919 | 49515 | 23930 | 76882 |
| Provincial | 72159 | 5277 | 959978 | 4620 | 1701258 |

Table 12 reflects that most learners in Limpopo are attending primary schools in the Vhembe District. 57% of all learners in Limpopo are attending primary schools (see table 12 and figure 9)

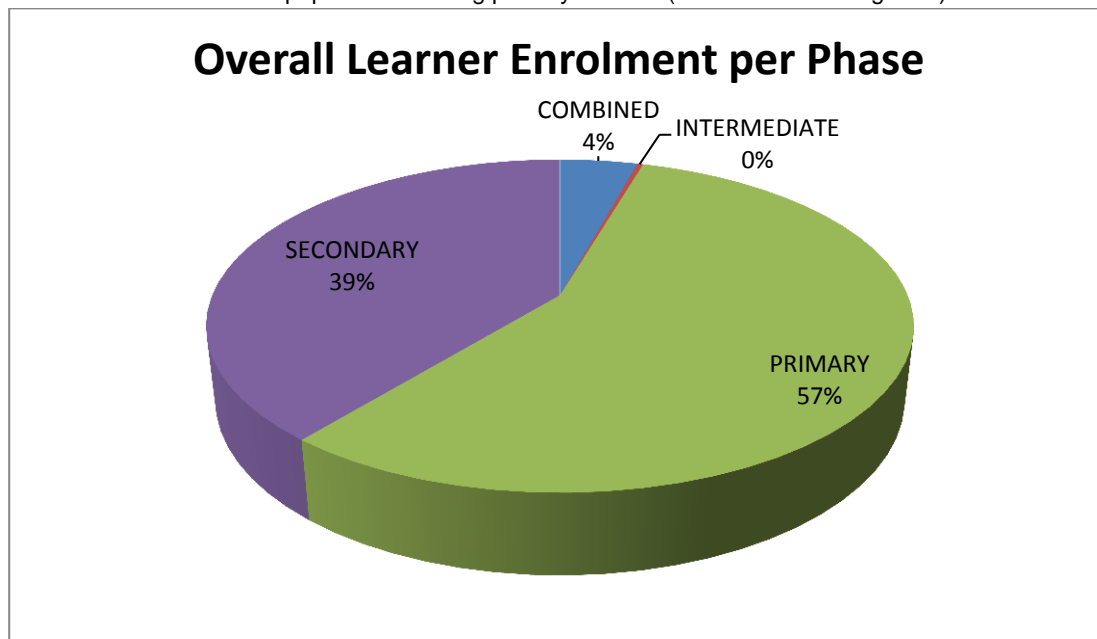


Figure 9: Overall Learner Enrolment per Phase

Table 13: Public Learner Enrolment per Phase and District

| District | COMBINED | INTERMEDIATE | PRIMARY | SECONDARY |
|-------------------|--------------|--------------|---------------|---------------|
| LEBOWAKGOMO | 1001 | 0 | 53996 | 38329 |
| MOGALAKWENA | 798 | 0 | 54655 | 37845 |
| MOPANI | 1105 | 1087 | 142622 | 94687 |
| POLOKWANE | 4855 | 0 | 156881 | 117116 |
| RIBA CROSS | 0 | 0 | 56916 | 37927 |
| SEKHUKHUNE | 15765 | 3271 | 145524 | 97451 |
| TSHIPISE-SAGOLE | 1185 | 0 | 41911 | 28606 |
| TZANEEN | 1485 | 0 | 56639 | 42824 |
| VHEMBE | 6031 | 0 | 190559 | 140509 |
| WATERBERG | 2241 | 919 | 49435 | 23930 |
| Provincial | 34466 | 5277 | 949138 | 659224 |

Table 13 reflects that Sekhukhune has the highest Learner Enrolment in Combined and Intermediate Public Schools. Vhembe has the highest Learner Enrolment in Primary and Secondary Public Schools.

Table 14: Independent Learner Enrolment per Phase and District

| District | COMBINED | PRIMARY | SECONDARY |
|-------------------|--------------|--------------|-------------|
| LEBOWAKGOMO | 1300 | 0 | 0 |
| MOGALAKWENA | 1393 | 752 | 364 |
| MOPANI | 4790 | 71 | 93 |
| POLOKWANE | 6260 | 3193 | 2929 |
| RIBA CROSS | 3099 | 137 | 0 |
| SEKHUKHUNE | 5406 | 607 | 346 |
| TSHIPISE-SAGOLE | 1587 | 501 | 0 |
| TZANEEN | 2088 | 980 | 470 |
| VHEMBE | 11493 | 4519 | 418 |
| WATERBERG | 277 | 80 | 0 |
| Provincial | 37693 | 10840 | 4620 |

Table 14 shows that there are no Intermediate Independent Schools in Limpopo. Vhembe has the highest Learner Enrolment in Independent Primary- and Combined Schools. Vhembe also has the highest overall Learner Enrolment in Independent Schools in Limpopo. Polokwane has the highest Learner Enrolment in Independent Secondary Schools.

3.1.7 Table 15: Number of Learners in Public Schools per Quintile and District

| District | Quintile 1 | Quintile 2 | Quintile 3 | Quintile 4 | Quintile 5 |
|-------------------|---------------|---------------|---------------|--------------|--------------|
| LEBOWAKGOMO | 31522 | 48891 | 11534 | 1015 | 364 |
| MOGALAKWENA | 13460 | 66000 | 8517 | 477 | 4844 |
| MOPANI | 105892 | 51982 | 76384 | 2007 | 3236 |
| POLOKWANE | 41342 | 115671 | 104709 | 2880 | 14250 |
| RIBA CROSS | 79239 | 13749 | 890 | 502 | 463 |
| SEKHUKHUNE | 188733 | 64577 | 3279 | 2022 | 3400 |
| TSHIPISE-SAGOLE | 11650 | 46623 | 12460 | 0 | 969 |
| TZANEEN | 57501 | 3267 | 35542 | 694 | 3944 |
| VHEMBE | 32448 | 212772 | 83033 | 5539 | 3307 |
| WATERBERG | 15077 | 30877 | 18553 | 562 | 11456 |
| Provincial | 576864 | 654409 | 354901 | 15698 | 46233 |

Table 15 reflects that most learners attend schools that are in Quintile 2. Provincially 96.2% of learners are attending no-fee schools (Quintile 1, 2 and 3) (see table 15 and figure 10)

Public Learner Enrolment per Quintile

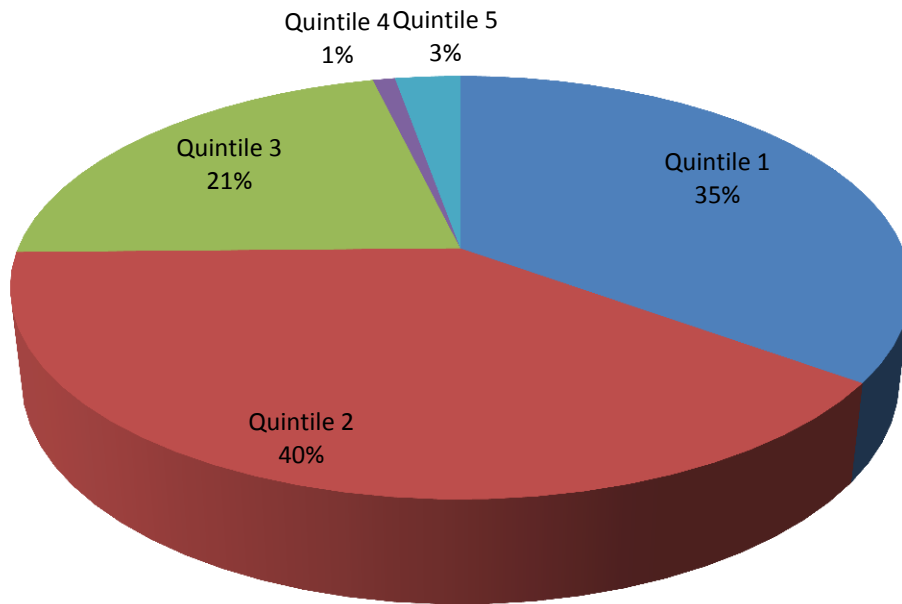


Figure 10: Public Learner Enrolment per Quintile

Figure 10 reflects that most Public Ordinary Schools (40 %) in Limpopo are in Quintile 2 and only 1% of schools are in Quintile 4.

3.2. SCHOOL INFORMATION

3.2.1 Number of Ordinary Schools per School Sector

Number of Independent and Public Schools in Limpopo

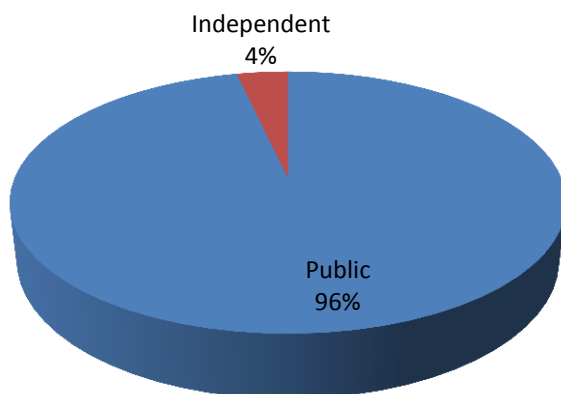


Figure 11: Number of Independent and Public Schools in Limpopo

Figure 11 reflects that Public Schools forms 96 % of all Ordinary Schools in Limpopo Whereas the Public Learner Enrolment forms 97 % (compare with figure 1 on page 4)

3.2.2 Table 16: Number of Schools (Both Public and Independent) per Phase and District

| District | COMBINED | INTERMEDIATE | PRIMARY | SECONDARY | TOTAL |
|-------------------|------------|--------------|-------------|-------------|-------------|
| LEBOWAKGOMO | 8 | 0 | 142 | 100 | 250 |
| MOGALAKWENA | 11 | 0 | 165 | 101 | 277 |
| MOPANI | 15 | 6 | 296 | 171 | 488 |
| POLOKWANE | 19 | 0 | 420 | 255 | 694 |
| RIBA CROSS | 6 | 0 | 165 | 92 | 263 |
| SEKHUKHUNE | 42 | 8 | 387 | 235 | 672 |
| TSHIPISE-SAGOLE | 7 | 0 | 163 | 54 | 224 |
| TZANEEN | 11 | 0 | 142 | 76 | 229 |
| VHEMBE | 38 | 0 | 525 | 230 | 793 |
| WATERBERG | 12 | 3 | 119 | 48 | 182 |
| Provincial | 169 | 17 | 2524 | 1362 | 4072 |

Table 16 reflects that Sekhukhune has the most Combined and Intermediate Schools, Vhembe has the most Primary- and Polokwane has the most Secondary Schools in Limpopo.

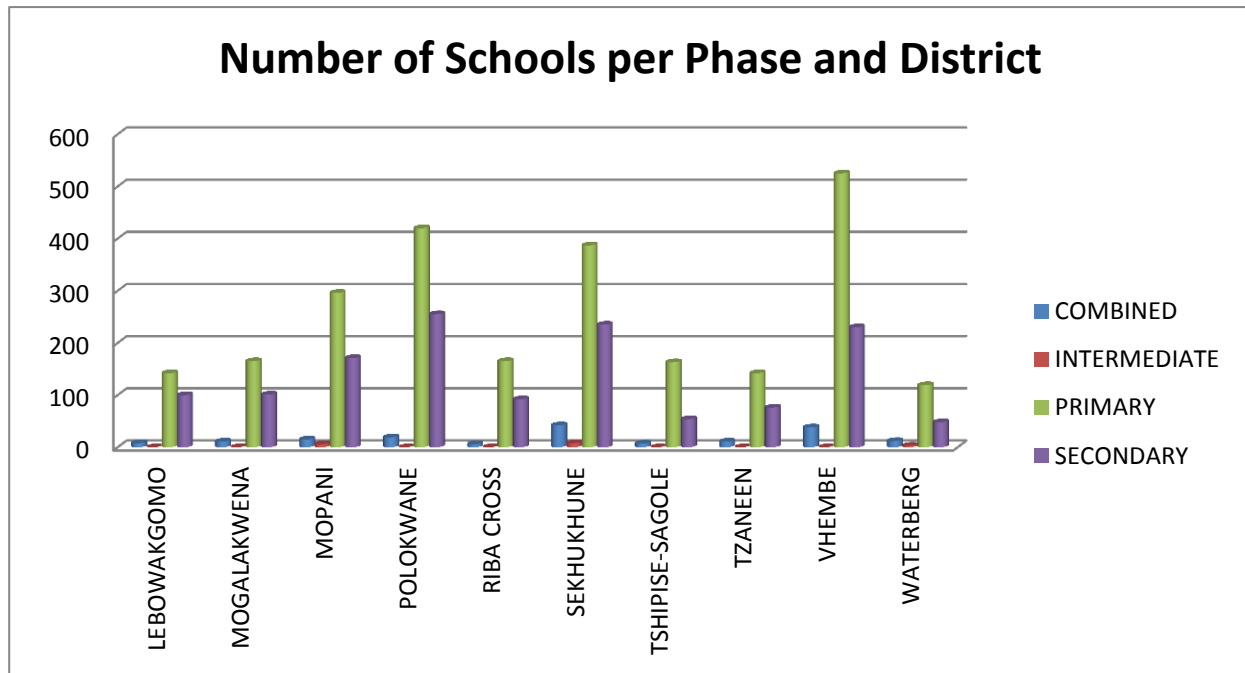


Figure 12: Number of Schools per Phase and District

Table 16 reflects that more than half of the total number of schools in Limpopo is Primary schools of which most are in the Vhembe District whilst most Secondary schools are in the Polokwane District (see table 16 and figure 12)

Table 17: Number of Public Ordinary Schools per Phase:

| Phase | Number of Public Schools |
|--------------|--------------------------|
| COMBINED | 72 |
| INTERMEDIATE | 17 |
| PRIMARY | 2485 |
| SECONDARY | 1353 |
| Total | 3927 |

Table 17 reflects that 63 % of Ordinary Public Schools in Limpopo are Primary Schools (see table 17 and figure 13) The number of Primary Schools decreased with 1% since 2012.

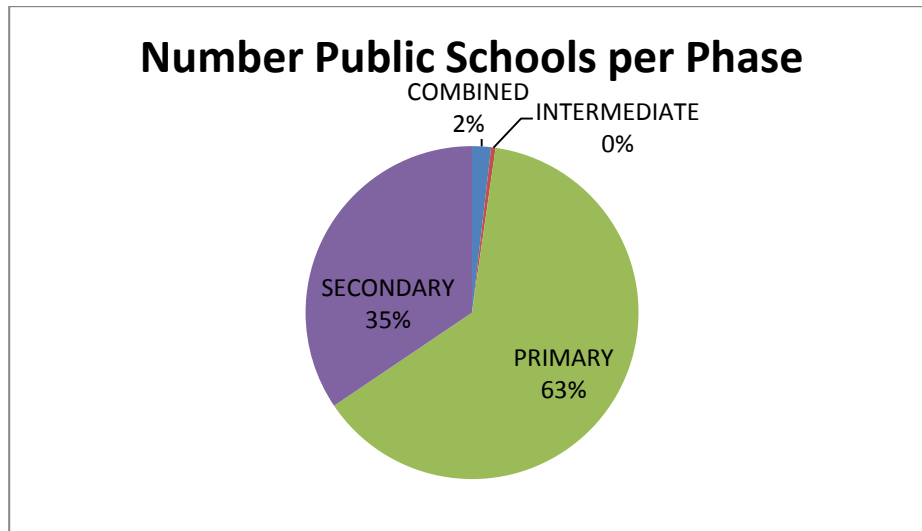


Figure 13: Number of Public Schools per Phase as Provincial Percentage

Table 18: Number of Independent Ordinary Schools per Phase:

| Phase | Number of Independent Schools |
|--------------|-------------------------------|
| COMBINED | 97 |
| PRIMARY | 39 |
| SECONDARY | 9 |
| Total | 145 |

Table 18 shows that there are no Independent Intermediate Schools in Limpopo. 67 % of Independent Schools are Combined Schools and only 6 % are Secondary Schools (see table 18 and figure 14) The number of Secondary Independent Schools decreased with 2% whilst the number of Combined Independent Schools increased with 2% since 2012.

Number of Independent Schools

per Phase

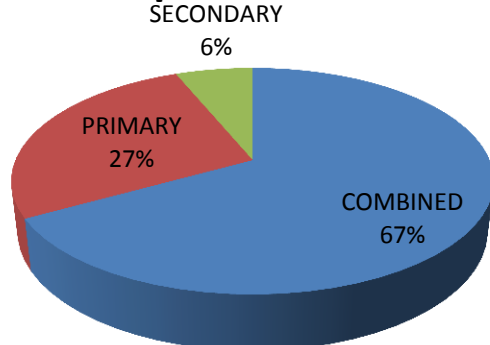


Figure 14: Number of Independent Schools per Phase as Percentage

3.2.3 Table 19: Number of Public Schools per Quintile and District

| District | Quintile 1 | Quintile 2 | Quintile 3 | Quintile 4 | Quintile 5 |
|-------------------|-------------|-------------|------------|------------|------------|
| LEBOWAKGOMO | 100 | 124 | 21 | 1 | 1 |
| MOGALAKWENA | 60 | 185 | 16 | 1 | 6 |
| MOPANI | 233 | 107 | 124 | 5 | 5 |
| POLOKWANE | 134 | 324 | 193 | 4 | 16 |
| RIBA CROSS | 217 | 33 | 2 | 2 | 1 |
| SEKHUKHUNE | 504 | 136 | 5 | 5 | 5 |
| TSHIPISE-SAGOLE | 48 | 147 | 21 | 0 | 2 |
| TZANEEN | 150 | 7 | 56 | 1 | 5 |
| VHEMBE | 78 | 499 | 157 | 5 | 4 |
| WATERBERG | 56 | 78 | 17 | 3 | 23 |
| Provincial | 1580 | 1640 | 612 | 27 | 68 |

Table 19 reflects that most schools in Limpopo are in Quintile 2 and in the Vhembe District.

The least schools are in Quintile 4. Most schools in Sekhukhune are in Quintile 1 (see table 19 and figure 15)

There are 8 more schools in Quintile 1 and 2 schools more in Quintile 3 since 2012.

Number of Public Schools per Quintile

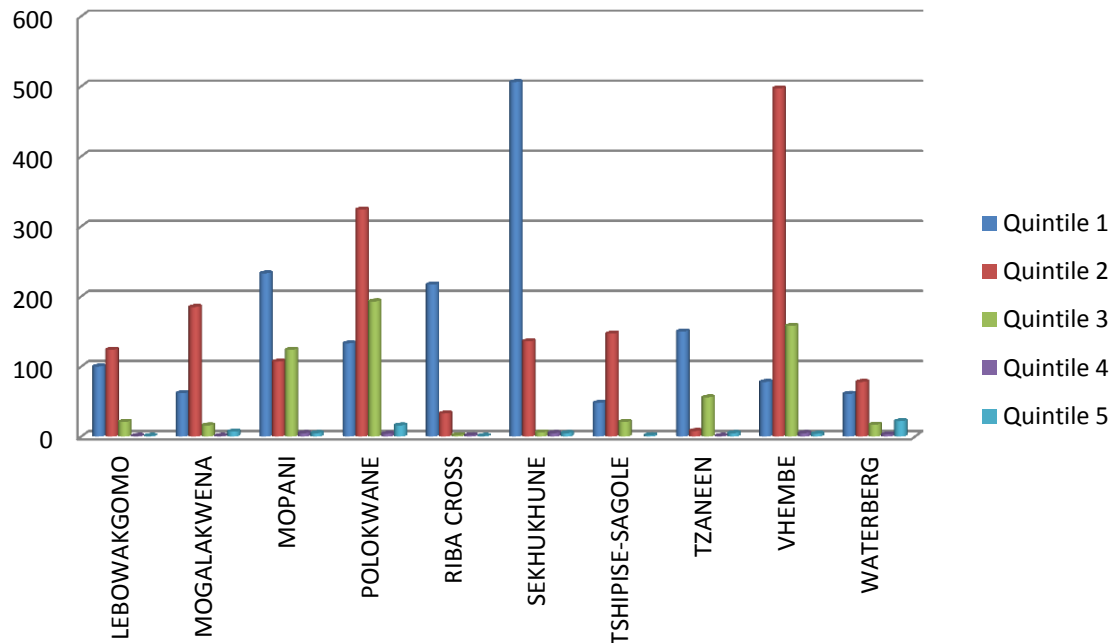


Figure 15: Number of Public Schools per Quintile

In Figure 15 it is seen that in 4 Districts, most schools are in Quintile 1 and in the other 6 Districts, most schools are in Quintile 2.

Number of Public Schools per Quintile

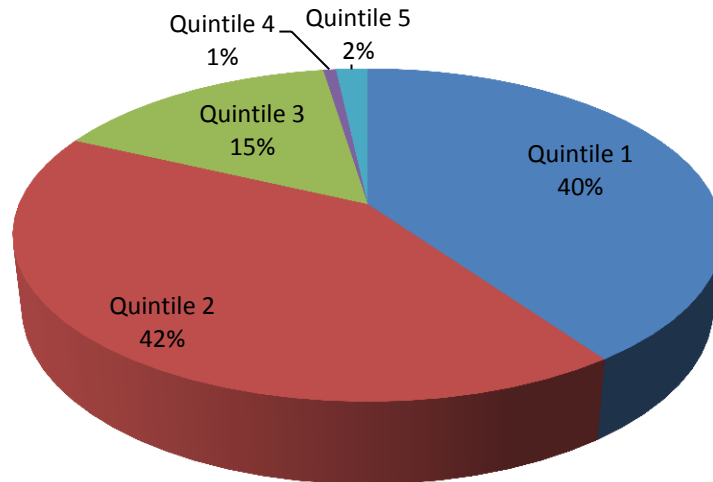


Figure 16: Number of Public Schools per Quintile

Quintile 1 schools are the poorest whilst Quintile 5 schools are the less poor.

Less than 3 % of Public Ordinary Schools in Limpopo are in Quintile 4 and 5 (Fee Schools)

Provincially 97.6 % of Public Schools are no-fee Schools (Quintile 1, 2 and 3) as in 2012 (see figure 16)

4. SNE INFORMATION

4.1 SNE LEARNER, EDUCATOR AND SCHOOL INFORMATION

Table 20: Number of Learners, Educators and Schools in the SNE Sector, by District, in 2012

| District | SNE Schools | | | | | |
|-------------------|-------------|--------------------------|------------|--------------------------|-----------|--------------------------|
| | Learners | As % of Provincial Total | Educators | As % of Provincial Total | Schools | As % of Provincial Total |
| LEBOWAKGOMO | 902 | 10.9 | 77 | 10.9 | 3 | 8.8 |
| MOGALAKWENA | 31 | 0.4 | 2 | 0.3 | 1 | 2.9 |
| MOPANI | 602 | 7.3 | 48 | 6.8 | 2 | 5.9 |
| POLOKWANE | 2834 | 34.2 | 269 | 38.1 | 11 | 32.4 |
| SEKHUKHUNE | 930 | 11.2 | 80 | 11.3 | 6 | 17.6 |
| TZANEEN | 375 | 4.5 | 45 | 6.4 | 2 | 5.9 |
| VHEMBE | 1914 | 23.1 | 133 | 18.8 | 6 | 17.6 |
| WATERBERG | 704 | 8.5 | 52 | 7.4 | 3 | 8.8 |
| Provincial | 8292 | 100.0 | 706 | 100.0 | 34 | 100.0 |

Table 20 shows how many Public SNE schools there were per District in 2013 and how many learners and educators there were in each. In 2013, there are 109 less learners in Special schools in Limpopo. Provincially, more than a third of SNE learners, educators and schools are in the Polokwane District. (34.2%)

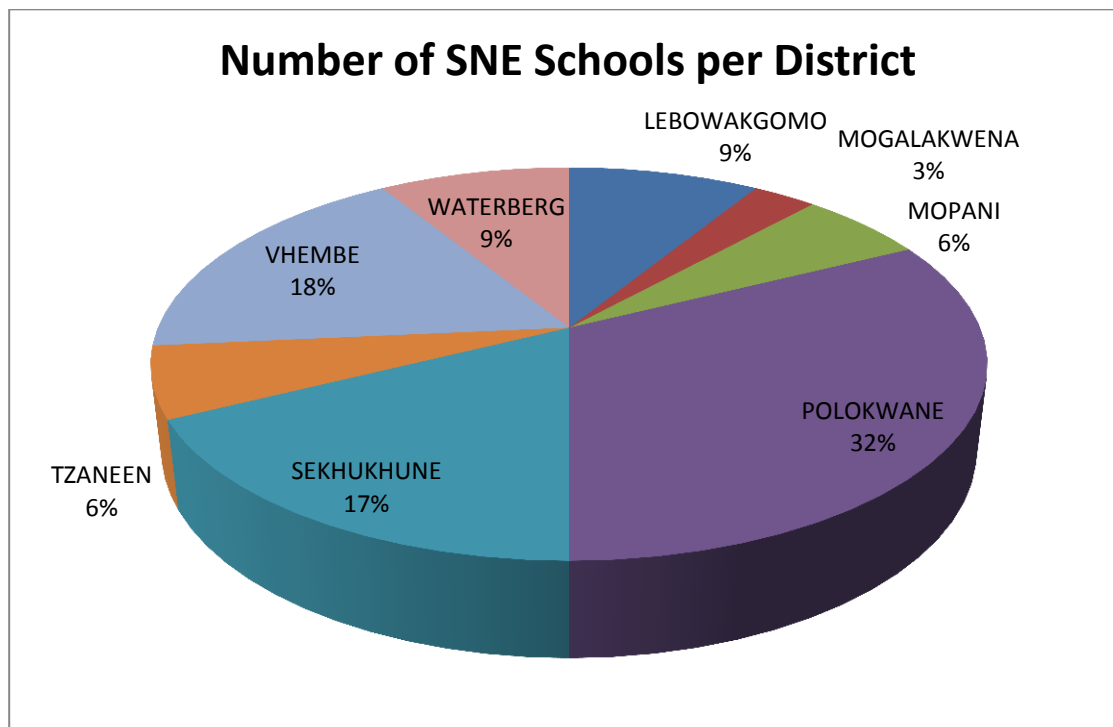


Figure 17: Number of SNE Schools per District

Figure 17 reflects that most SNE Schools are located in the Polokwane District and there are no SNE schools in the Riba Cross and Tshipise-Sagole Districts of Limpopo.

4.1.1 Table 21: Number of Learners in SNE Sector per Population group

| DISTRICT | African | Coloured | Indian | Other | White |
|-------------------|-------------|-----------|----------|----------|------------|
| LEBOWAKGOMO | 902 | 0 | 0 | 0 | 0 |
| MOGALAKWENA | 31 | 0 | 0 | 0 | 0 |
| MOPANI | 602 | 0 | 0 | 0 | 0 |
| POLOKWANE | 2706 | 40 | 4 | 0 | 84 |
| SEKHUKHUNE | 930 | 0 | 0 | 0 | 0 |
| TZANEEN | 375 | 0 | 0 | 0 | 0 |
| VHEMBE | 1914 | 0 | 0 | 0 | 0 |
| WATERBERG | 611 | 6 | 0 | 1 | 86 |
| Provincial | 8071 | 46 | 4 | 1 | 170 |

Table 21 reflects that 97.3% of SNE learners in Limpopo are from the African population group.

4.1.2 Table 22: Number of Learners in SNE Schools per Grade

| DISTRICT | Pre-Gr R | Gr R | Gr 1 | Gr 2 | Gr 3 | Gr 4 | Gr 5 | Gr 6 | Gr 7 | Gr 8 | Gr 9 | Gr 10 | Gr 11 | Gr 12 | Pre-Voc | Remedial | Special | Total |
|-------------------|-----------|------------|------------|------------|------------|------------|------------|------------|------------|------------|------------|------------|-----------|-----------|------------|-----------|-------------|-------------|
| LEBOWAKGOMO | 0 | 98 | 84 | 100 | 108 | 127 | 100 | 95 | 79 | 0 | 0 | 0 | 0 | 0 | 79 | 0 | 32 | 902 |
| MOGALAKWENA | 0 | 0 | 31 | 0 | 0 | 0 | 0 | 0 | 0 | 0 | 0 | 0 | 0 | 0 | 0 | 0 | 0 | 31 |
| MOPANI | 0 | 0 | 0 | 0 | 0 | 0 | 0 | 0 | 0 | 0 | 0 | 0 | 0 | 0 | 0 | 0 | 602 | 602 |
| POLOKWANE | 0 | 24 | 23 | 23 | 29 | 57 | 17 | 16 | 29 | 97 | 84 | 124 | 72 | 42 | 29 | 17 | 2151 | 2834 |
| SEKHUKHUNE | 0 | 88 | 65 | 54 | 41 | 35 | 45 | 33 | 39 | 0 | 0 | 0 | 0 | 0 | 0 | 0 | 530 | 930 |
| TZANEEN | 0 | 66 | 72 | 48 | 46 | 38 | 28 | 33 | 44 | 0 | 0 | 0 | 0 | 0 | 0 | 0 | 0 | 375 |
| VHEMBE | 91 | 44 | 128 | 65 | 66 | 65 | 69 | 68 | 84 | 18 | 20 | 12 | 7 | 10 | 0 | 0 | 1167 | 1914 |
| WATERBERG | 0 | 3 | 7 | 13 | 10 | 11 | 12 | 13 | 7 | 5 | 9 | 0 | 0 | 0 | 0 | 0 | 614 | 704 |
| Provincial | 91 | 323 | 410 | 303 | 300 | 333 | 271 | 258 | 282 | 120 | 113 | 136 | 79 | 52 | 108 | 17 | 5096 | 8292 |

There are 15 from 34 SNE schools with learners enrolled in various grades.
61.5 % of SNE learners in Limpopo are in a special grade for SNE schools.

4.1.3 Table 23: Public SNE Schools Male and Female Comparison

| District | Female | Male | Total |
|-------------------|-------------|-------------|-------------|
| LEBOWAKGOMO | 324 | 578 | 902 |
| MOGALAKWENA | 12 | 19 | 31 |
| MOPANI | 254 | 348 | 602 |
| POLOKWANE | 1041 | 1793 | 2834 |
| SEKHUKHUNE | 377 | 553 | 930 |
| TZANEEN | 170 | 205 | 375 |
| VHEMBE | 735 | 1179 | 1914 |
| WATERBERG | 233 | 471 | 704 |
| Provincial | 3146 | 5146 | 8292 |

Table 23 reflects that Polokwane and Vhembe have the highest number of male and female SNE learners and the male learners are more than the female learners in all Districts. Provincially, 62.1% of SNE learners are male. The number of male SNE learners decreased with 103 since 2012. (See table 23 and figure 18)

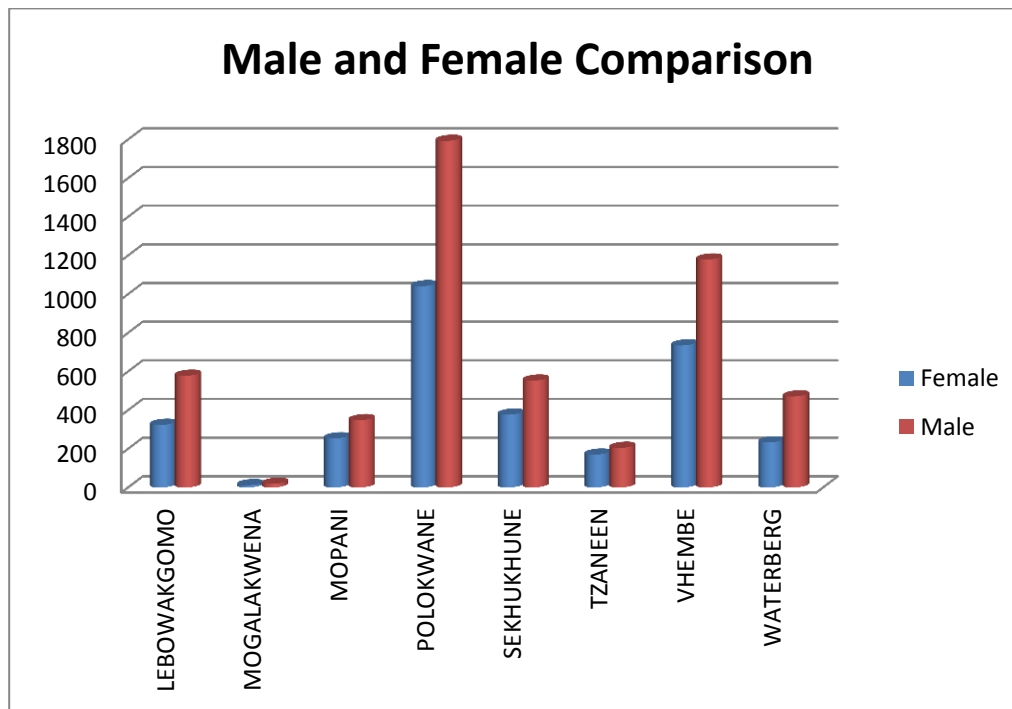


Figure 18: SNE Male and Female Comparison per District

In Figure 18 it is clearly seen that SNE female learners are less than male learners in all Districts

4.1.4 Table 24: Learner Enrolment per Disability and Gender in SNE Schools

| Disability | Female | Male | Total |
|--|-------------|-------------|-------------|
| Attention Deficit Disorder | 65 | 124 | 189 |
| Autistic Spectrum Disorder | 87 | 127 | 214 |
| Behavioural disorder/ Conduct Disorder | 93 | 201 | 294 |
| Blindness | 99 | 148 | 247 |
| Cerebral Palsy | 200 | 254 | 454 |
| Deaf-Blindness | 2 | 2 | 4 |
| Deafness | 256 | 316 | 572 |
| Epilepsy | 110 | 144 | 254 |
| Hard of Hearing | 73 | 80 | 153 |
| Mild to Moderate Intellectual disability | 716 | 1543 | 2259 |
| Multiple Disabled | 28 | 24 | 52 |
| Partial Sighted/ Low vision | 166 | 223 | 389 |
| Physical disability | 140 | 170 | 310 |
| Psychiatric disorder | 10 | 11 | 21 |
| Severe to profound intellectual disability | 998 | 1550 | 2548 |
| Specific learning disability | 103 | 229 | 332 |
| Provincial | 3146 | 5146 | 8292 |

Table 24 reflects that 30.7 % of SNE learners suffers from severe to profound intellectually disability. 27.2% of SNE learners are mild to moderate intellectually disabled. Male learners are much more than female learners in all disabilities (See figure 19)

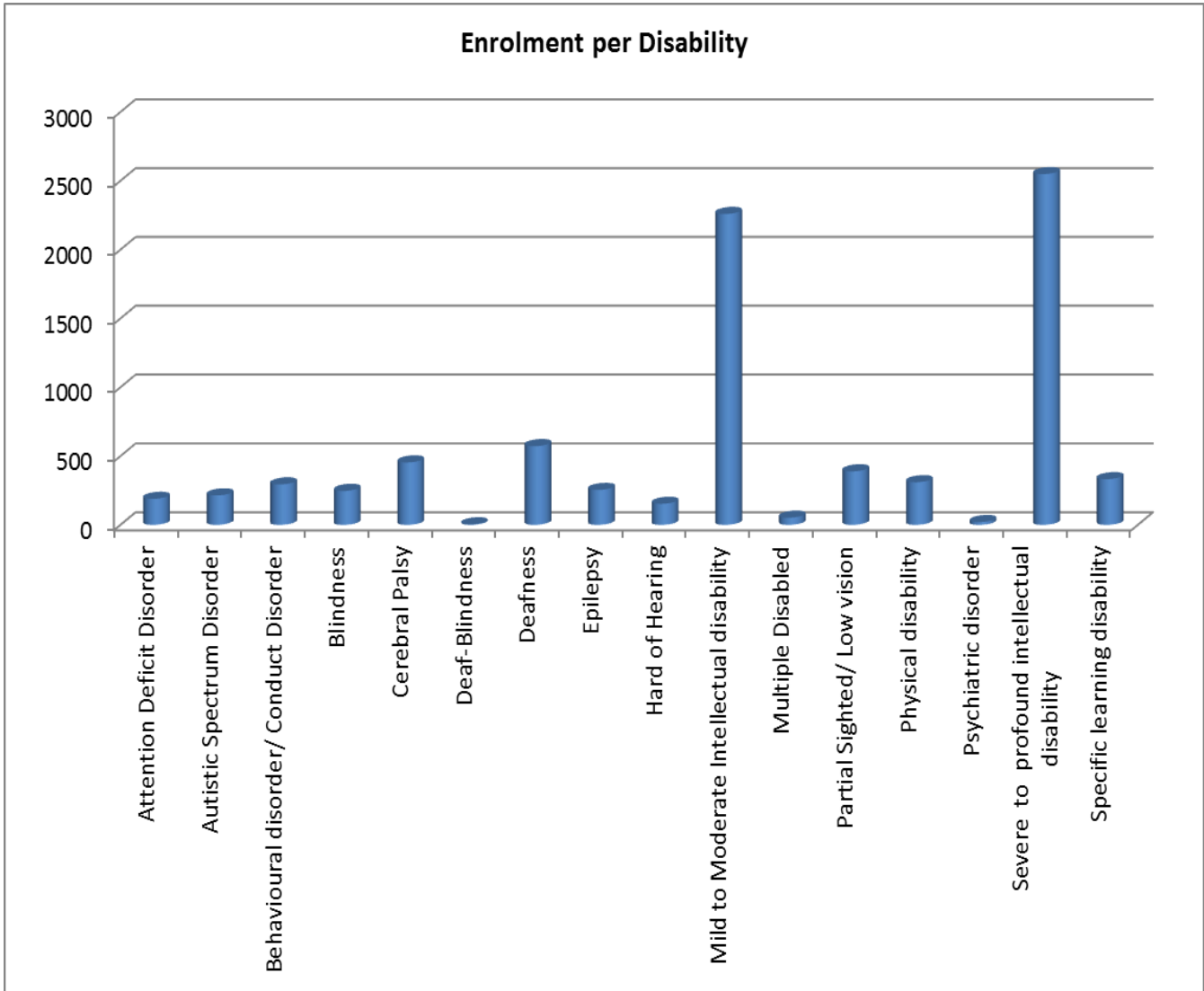


Figure 19: SNE Enrolment per Disability

Figure 19 displays that most SNE learners are severely to profound intellectually disabled, followed by the mildly to moderately intellectually disabled.

5. ECD INFORMATION

5.1 ECD LEARNER, EDUCATOR AND CENTRE INFORMATION

ECD centres must first register with the Social Development Department before registering with the Department of Education.

5.1.1 Table 26: Number of ECD Learners, Educators and Centres per District

| District | ECD Centers | | | | | |
|-------------------|---------------|--------------------------|-------------|--------------------------|-------------|--------------------------|
| | Learners | As % of Provincial Total | Educators | As % of Provincial Total | Centres | As % of Provincial Total |
| LEBOWAKGOMO | 7267 | 6.8 | 283 | 6.3 | 123 | 7.2 |
| MOGALAKWENA | 3515 | 3.3 | 162 | 3.6 | 69 | 4.1 |
| MOPANI | 22269 | 20.8 | 895 | 19.8 | 280 | 16.5 |
| POLOKWANE | 21774 | 20.3 | 821 | 18.2 | 354 | 20.8 |
| RIBA CROSS | 4848 | 4.5 | 204 | 4.5 | 89 | 5.2 |
| SEKHUKHUNE | 13937 | 13.0 | 673 | 14.9 | 267 | 15.7 |
| TSHIPISE - SAGOLE | 2732 | 2.6 | 123 | 2.7 | 59 | 3.5 |
| TZANEEN | 6432 | 6.0 | 250 | 5.5 | 76 | 4.5 |
| VHEMBE | 19234 | 18.0 | 877 | 19.4 | 294 | 17.3 |
| WATERBERG | 5028 | 4.7 | 227 | 5.0 | 89 | 5.2 |
| Provincial | 107036 | 100.0 | 4515 | 100.0 | 1700 | 100.0 |

Table 26 shows how many ECD Centres there were per District in 2013 and how many learners and educators there were in each. Provincially most ECD learners (20.8%) are in the Mopani District whilst most ECD Centres (20.8%) are in the Polokwane District of Limpopo. (See table 26 and figure 20)

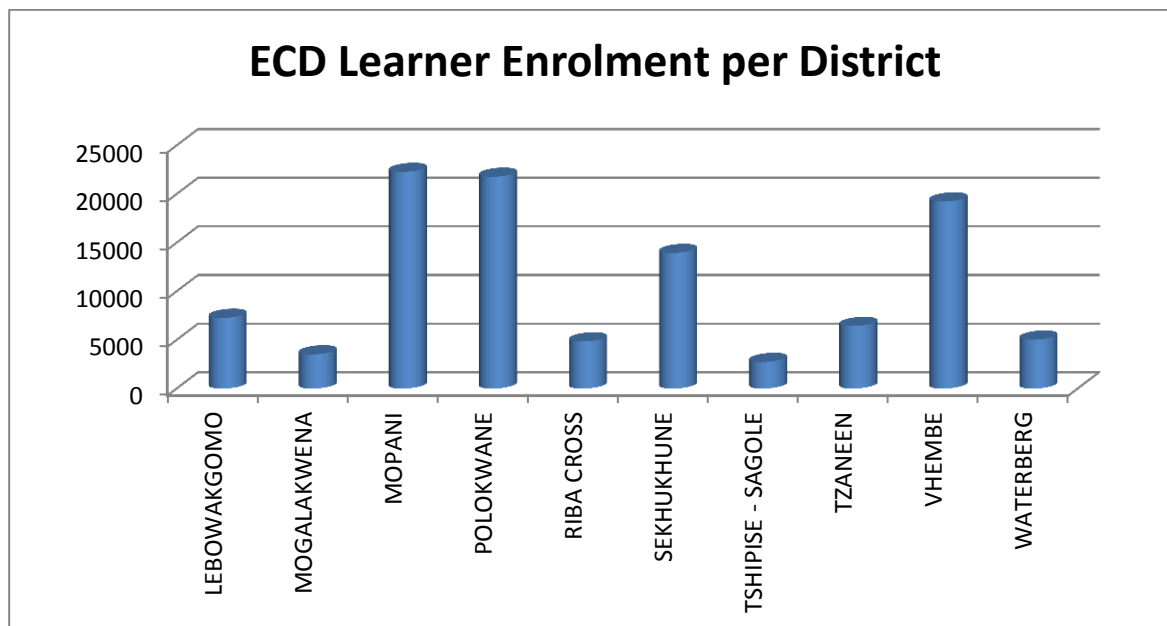


Figure 20: ECD Learner Enrolment per District

Figure 20 displays that most ECD centres in Limpopo are in the Mopani District followed by the Polokwane and Vhembe Districts.

5.1.2 Table 27: ECD Male and Female Comparison per District

| District | Female | Male | Total |
|-------------------|--------------|--------------|---------------|
| LEBOWAKGOMO | 3597 | 3670 | 7267 |
| MOGALAKWENA | 1770 | 1745 | 3515 |
| MOPANI | 11298 | 10971 | 22269 |
| POLOKWANE | 10786 | 10988 | 21774 |
| RIBA CROSS | 2396 | 2452 | 4848 |
| SEKHUKHUNE | 6932 | 7005 | 13937 |
| TSHIPISE - SAGOLE | 1392 | 1340 | 2732 |
| TZANEEN | 3205 | 3227 | 6432 |
| VHEMBE | 9638 | 9596 | 19234 |
| WATERBERG | 2508 | 2520 | 5028 |
| Provincial | 53522 | 53514 | 107036 |

Table 27 reflects that enrolment levels for male and female ECD learners are almost equal in all Districts. Mopani has the most female learners and Polokwane has the most male learners Attending ECD centres (see table 27 and figure 21)

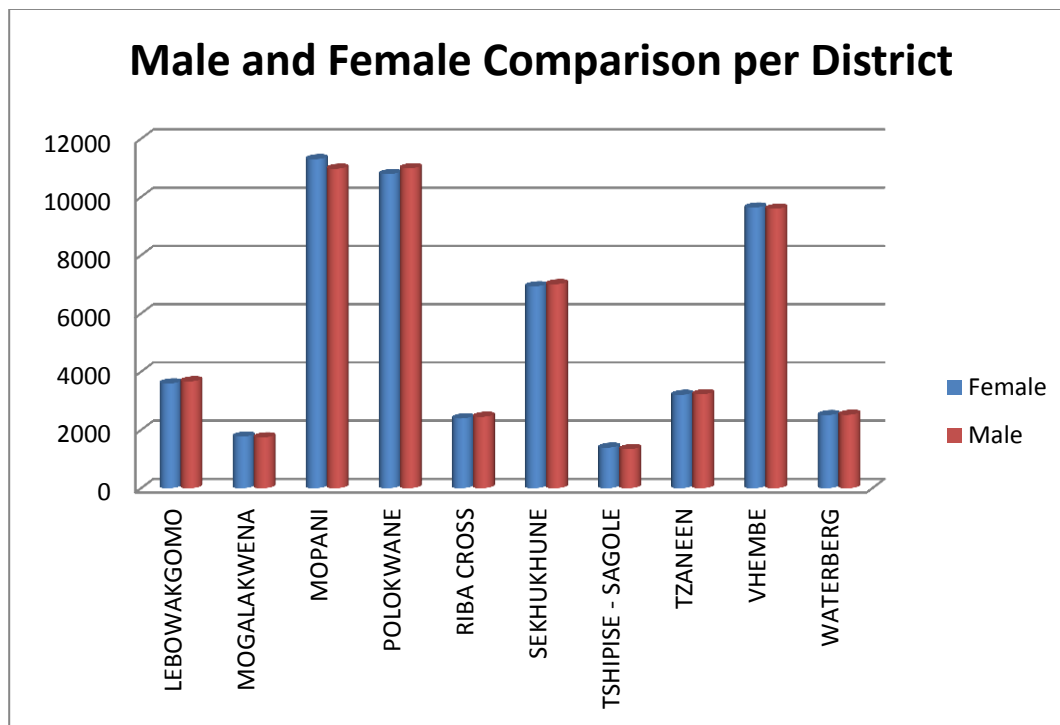


Figure 21: ECD Male and Female Comparison per District

5.1.3 Table 28: ECD Learner Enrolment per Grade and District

| District | Pre-Gr R | Gr R | Total |
|-------------------|---------------|-------------|---------------|
| LEBOWAKGOMO | 7096 | 171 | 7267 |
| MOGALAKWENA | 3372 | 143 | 3515 |
| MOPANI | 21370 | 899 | 22269 |
| POLOKWANE | 21393 | 381 | 21774 |
| RIBA CROSS | 4759 | 89 | 4848 |
| SEKHUKHUNE | 13062 | 875 | 13937 |
| TSHIPISE - SAGOLE | 2732 | 0 | 2732 |
| TZANEEN | 6132 | 300 | 6432 |
| VHEMBE | 19230 | 4 | 19234 |
| WATERBERG | 4680 | 348 | 5028 |
| Provincial | 103826 | 3210 | 107036 |

Mopani has the most ECD learners in Limpopo. 97% of learners attending ECD centres are in Pre-Grade R (See Table 28 and figure 21)

6. Contact Details: Provincial EMIS Directorate

Information on different sectors of the education system may be requested (preferably by email) from the following members of the Limpopo Department of Education and the Directorate: Education Management Information System (EMIS):

Senior Manager: EMIS

Mr. L.F. Ramphele

Limpopo Department of Education

113 Biccard Street

Polokwane, 0699

Tel: 015 290 9421

Email: RampheleLF@edu.limpopo.gov.za

Deputy Chief Education Specialist: EMIS

Ms. I. Armer (Queries/Data Dissemination/Narration/Publications/Master list)

Tel: 015 290 7929

Email: ArmerI@edu.limpopo.gov.za

General Manager: Education Planning

Mr. M.E. Sekole

Tel: 015 290 7635

Email: SekoleME@edu.limpopo.gov.za

Senior General Manager: Quality Assurance and Education Planning

Mrs. C. Makondo

Tel: 015 290 7822

Email: MakondoC@edu.limpopo.gov.za